



Strengthening America's Infrastructure Together

On October 29, 2010, ICA announced the acquisition of Florence & Hutcheson, a full-service engineering services firm headquartered in Paducah, Kentucky and with offices in 18 cities in the Midwest and Southeast United States.

"The acquisition of Florence & Hutcheson expands ICA's footprint in the transportation sector and will result in growth opportunities for both its traditional business lines and engineering services," CEO and President Butch Eley said.

This is a strategic acquisition that positions ICA as the most comprehensive provider of performance-based highway asset maintenance management services at a time when governments have fewer dollars to protect their infrastructure investments. "With the addition of high-quality engineering, we can provide a more innovative spectrum of services to positively impact the infrastructure life cycle—from planning and design to life-long maintenance," Eley said. "Florence & Hutcheson is a company with an outstanding history, and a reputation hard earned through performance. Combining these two companies will generate a great amount of dynamic synergy."

Florence & Hutcheson will continue operations under its current name as a wholly owned ICA subsidiary. Its engineering clients will see no changes due to the ownership and Florence & Hutcheson senior management will remain in place.

"The U.S. infrastructure continues to increase in its importance to our society and to our economy. By joining forces with ICA, we have broadened our expertise and service offerings from beyond just the initial project design and construction phase to encompass the ultimate objective of maximizing the assets' complete life-cycle. Together, the ICA/ Florence & Hutcheson combination will work hard and effectively to strengthen America's infrastructure," said Ben Glunt, Chairman of Florence & Hutcheson.

Florence & Hutcheson employs approximately 300 professionals. Its services include planning, design-build, civil, geotechnical, environmental, construction engineering and inspection, and water resources. The combined companies will have about 600 employees in offices across the region.

Florence & Hutcheson is one of the most respected full-service, multi-disciplinary civil engineering and environmental management firms in the country. Established in 1965, F&H was built upon the idea of creating a company that would always be focused on the traditional values of engineering excellence, hard work and the goal of exceeding client expectations.

Founded in Paducah, Kentucky, the original team rapidly began serving departments of transportation and municipalities throughout Kentucky, Illinois and Indiana.

"The acquisition of Florence & Hutcheson expands ICA's footprint in the transportation sector and will result in growth opportunities for both its traditional business lines and engineering services."

—CEO and President
Butch Eley

INSIDE THIS ISSUE

Virginia Snow & Ice
Dry Run

Project Updates

New Technology for
Battling winter

Employee Profile

Ten Year
Anniversaries!

Cards & Letters

ICA brings Christmas
to communities

Milestones

ICA drills for winter storms

Be prepared. It's not just the Boy Scouts who benefit from this wise motto. In October, teams from two of ICA's TAMS projects for the Virginia Department of Transportation performed their annual snow and ice dry run to prepare for the upcoming winter season. A joint exercise of ICA personnel, subcontractors and in some cases representative from the Department, involved a review of equipment and procedures to ensure timely and smooth operations for safe highways when the first winter storm hits.



The I-64 project in Williamsburg began their 3-day process on October 14. Thursday and Friday were spent inspecting the two subcontractors' equipment including: GPS installation, plow and spreader installation, vehicle maintenance, and equipment calibration. On Saturday all participants assembled for breakfast and a complete review of the project's approved Snow and Ice Plan including truck numbers, route assignments, correct spreader calibrations, gang plowing techniques and a review of the owner's standards and expectations. The Williamsburg process was captained by Kim Chaney and Joe Drexler with good turnout and participation by the subs.



Dry run for ICA's snow and ice removal contract in Northern Virginia, which includes mitigation for areas around the Pentagon and Arlington Cemetery, was a one-day process on November 16th. This included participation from VDOT officials who performed a 20-point inspection check list on each vehicle; from wipers, horns and lights to radios, plows, spreaders and "Keep Back" signs. The week prior to inspection day Chuck Jones and the NOVA staff worked to perform routine maintenance checks on all 12 of the trucks required by contract; to rig the plows and spreaders for both ICA's and the subcontractors' trucks; calibrate the equipment, test it and make any repairs and adjustments. Before the gates were locked on the night of the 15th, all equipment had one final check to be ready for the owner's inspection in the morning.

Early on the 16th all the trucks were started and the spreaders, plows and lights checked. Two spreaders were discovered to have developed hydraulic fluid leaks and the ICA staff scrambled to replace lines as the owners began their inspections. VDOT awards a \$1400 mobilization fee for every truck that passes inspection and ten of the twelve ICA trucks passed with the two hydraulic challenged trucks passing the following Tuesday. Bobby Campbell, Mike Pontbriand and Dustin Kramer were on point for the NOVA process. A special "Thank You" to Chuck Jones and his group for bringing the spreaders/plows in to Dale City from the western part of the state and getting everything up and running.

— contributed by Gary Jennings, PM, NOVA

TOP: Lewis Howard surveys trucks on the lot in Dale City rigged with plows and spreaders on the afternoon prior to inspection.

BELOW: Joe Drexler conducts one of the snow and ice operations protocol classes at the ICA Williamsburg office

*As of Fourth Quarter 2010,
ICA manages 2,674 structures,
216 facilities and 4,129 lane miles.*

F&H from page 1

Within 10 years, F&H had expanded into Tennessee, Arkansas and Louisiana; and continued expansion throughout the 1970s and 1980s into Ohio, Mississippi, South Carolina, North Carolina and Virginia. In the 1990s, F&H was contracted by the Departments of Transportation in both Alabama and West Virginia, and was awarded its first contract in Georgia in 2002.

Focused primarily on Transportation and Civil Infrastructure Engineering, F&H has developed a solid reputation with federal, state, county and municipal agencies, as well as industrial and commercial clients.

While F&H has very sophisticated capabilities, the firm is also well respected for its personable and down-to-earth staff of 300 professionals. Great pride resides in the fact that Florence & Hutcheson has earned a strong reputation for its dedication to project schedule, a history of completing work within budget, excellent team cooperation and coordination, and unparalleled client service on which the firm was founded.

To learn more about F&H, see the special supplement included in this issue or visit their website at: www.flobut.com

Herndon, Virginia, October 4, 2010 - The Professional Landcare Network (PLANET) announced recipients of its annual 2010 Environmental Improvement Award. This year marks the program's 41st anniversary. Of the 162 projects entered in the awards program, 139 were recognized with an award: two Decade Awards, 35 Grand Awards, 55 Merit Awards and 47 Distinction Awards.

Congratulations to ICA's subcontractor, **Greener Pastures** who was the recipient of a Grand Award for their work on the President George Bush Turnpike project managed by ICA Project Manager **Chuck Royko**.

PLANET's Environmental Improvement Awards Program reflects the association's commitment to creating and preserving the beauty of our landscape. The program is designed to reward independent landscape, lawn care, and interior plantscaping professionals who execute superior projects. PLANET strives to increase public awareness of environmental improvement through contracted landscaping, lawn care, and interior plantscaping and encourages the consistent use of quality materials and workmanship.



Another bridge in Virginia gets a makeover by the Virginia Design/Build Bridge crew

South Carolina

ICA has been awarded a two-year renewal of the In-Service Bridge Engineering contract for the Ravenal Bridge System and six additional coastal bridges in Charleston, SC. This contract includes bridge maintenance and inspection services.

Georgia

ICA has submitted pre-qualification documents for a P3 Rest Area project for GDOT. This project requires a proposal for generating advertising revenue to offset the cost of maintenance. Short List decision to be announced in January.

On 12/21 ICA also submitted bids to provide custodial services for 15 Georgia Rest Areas.

Florida

ICA has submitted a proposal to Florida District 2 for highway asset maintenance for I-95 through Nassau, Clay and Duval Counties. Bids to open 1/17.

Texas

ICA has submitted a bid to provide Lighting Maintenance Services for the Houston Airport System. Bids are still under review.

States Use Technology and Efficiency to Cut the Cost of Battling Winter

Washington DC – Major snowfall and freezing temperatures are impacting a large portion of North America this winter. The National Weather Service says a La Niña is at least partially responsible and the agency predicts this weather pattern could cause a second consecutive year of record snowfalls in many parts of the United States.

The challenge for most state transportation departments will be to maintain a high level of service this winter season without the benefit of additional financial resources. Many states have already turned to new technology and environmentally sensitive solutions to cut costs and improve efficiency.

- **The Utah Department of Transportation (UDOT)** recently installed 17 HomeView Technologies® road condition monitoring cameras at remote locations throughout the state. The solar-powered system uses state-of-the-art, low-cost web cameras, high speed wireless communication, and infrared sensors to broadcast video from distant mountains passes or other problem areas. Now instead of sending a snow plow to investigate a location, supervisors can take a quick look and decide whether an area needs to be plowed. “So far this winter we have a net cost savings of about \$200,000 using this system,” said Lynn Bernhard, UDOT Operations Program Manager.
- **The Colorado Department of Transportation (CDOT)** has deployed 222 snowplows statewide, equipped with a Maintenance Decision Support System (MDSS), which combines advanced weather and road condition prediction and rules of practice

to help operators determine the proper application of anti-icing and de-icing chemicals on a route-by-route basis. CDOT is also using automatic de-icing systems to spray liquid de-icers once on-site sensors detect a decrease in surface temperatures and an increase in moisture.

- **The Missouri Department of Transportation** This season, more than a dozen state DOTs will be using the highly efficient 26-foot-wide Tow Plow that is pulled behind a conventional plow truck, allowing two interstate travel lanes to be cleared and treated in a single pass. The original design for the Tow Plow was the brainchild of a Missouri DOT (MoDOT) employee who applied his knowledge of farm equipment to snowplows. MoDOT worked with a snowplow contractor to design and build the version in use today.
- **The Tennessee Department of Transportation** This winter, the Tennessee Department of Transportation (TDOT), will use a substance called “Magic Salt” to help melt ice and snow during lower temperatures. Magic Salt, made from potato juice, is a biodegradable, non-corrosive and environmentally friendly substance. TDOT and several other states, including Maryland DOT, will also use beet juice to improve snow and ice removal from roadways when temperatures fall. TDOT is also adding ten new 14-foot snow plows across the state. The plows are more than four feet wider than traditional plows and have the ability to clear an entire travel lane in one pass. Some TDOT trucks will be fitted with new, underbody plows that are being tested for the capability to remove hard-packed ice from the roadway.

- **The California Department of Transportation** This season, the California Department of Transportation (Caltrans) and other state agencies that respond to emergencies will use WeatherShare, a new web-based tool that sends alerts, warnings, and advisories (depending on the level of danger) for fog, ice, winds, fire, and more. The system sends weather data to Caltrans’ transportation management center operators, maintenance staff, and other agencies, such as Emergency Medical Services and the California Department of Forestry and Fire Protection. Users can easily gather more information about a specific location or a statewide region through WeatherShare’s easy-to-use online maps. The public can view WeatherShare at <http://www.weathershare.org>.

“Innovation is critical,” said John Horsley, executive director of the American Association of State Highway and Transportation Officials. “And so is efficiency. Part of AASHTO’s mission is to help install new technologies as they become market-ready. We accomplish this objective through an AASHTO committee called Technology

Implementation Group (TIG), which helped to deploy the Maintenance support system (MDSS) and the Tow Plow. States suffered a major financial blow last year due to record-setting storms and blizzards, and all indications are state budgets will remain tight throughout 2011.”

State DOTs are also encouraging motorists to do their part to keep roads clear and drivers safe. When major storms are forecast, drivers should visit state DOT websites for the latest traveler information. Most states also offer 511 information lines and Twitter alerts. Citizens also should plan to stay off the roadways during major snow events to give more room to the plow trucks. They should also keep a set of chains in their vehicle and install them when necessary for adequate tire traction. Motorists should also carry an emergency kit with items like water, food, blankets, a battery operated radio, a shovel, ice scraper, and a flashlight.

A complete list of state web sites is available at www.transportation.org.

Source: AASHTO, Thursday, December 09, 2010

The 26 foot wide, 2-lane Tow Plow is doing winter duty in several States including Ohio, Missouri, Iowa, Utah, Kansas, Maine, Indiana, Wisconsin, Tennessee, Pennsylvania, Nebraska, Colorado

Photo furnished by Bob Lannert the inventor of the TowPlow.



Do You Know Mark Payne?

Contract Manager, Mark Payne, has been with ICA for four years and currently oversees all maintenance operations in Hillsborough County which is the largest county on the I-75 project D0901. He remarks that setting a work schedule when the project priorities change so often is one of his biggest challenges. Prior to joining ICA, Mark served 8 years with FDOT serving the Pinellas Co. Maintenance District 7 as Pesticide Coordinator and Permit Inspector. When not out on the road for ICA, Mark enjoys working on old Cadillacs and camping trips with his kids.



Mark is recognized as a team player by his supervisor, Randy Eddings, who received this grateful letter of thanks recently from a Florida traveler:

"I would like to bring to your attention one of your employees, Mark Payne, and complement him for his services. Last Tuesday I picked up a friend, who was just released from Tampa General Hospital after a 2 week stay from major surgery. On our way back to Sarasota we stopped at the rest area and when we were ready to leave my car would not start. ... Mark approached us ... and tried to get my car started. After several attempts he determined my battery was dead and I would need a new [one], he drove me to an auto parts store where I was able to purchase a new battery and back to my car where he proceeded to install the battery for me. Once installed, my car started and I was able to get back on the road after a short delay.

Mark Payne, I-75 contract manager

I can't thank Mark enough for his efforts and assistance, I was pretty discouraged being stranded there not so much for myself but for my friend who I know was very much looking forward to getting home after his major ordeal in the hospital. Mark dedicated himself to assist us all the way through until we were on the road again. After thanking Mark I tried to offer sending him a gift certificate or something in the mail and he refused, he said a thank you was sufficient.

Mark is a great asset to have on your team, you can be proud of the way he handles himself while doing his job. My friend Steve and I are extremely grateful he happened to come along when he did and assisted us until we were on our way again. Thank you Mark, you are greatly appreciated."

—Robert E. and Steve D.

ICA Honors 10-Year Employees Lansaw, Myers and Rolon

Three dedicated ICA Managers were honored in December at the quarterly Regional Managers' meeting in Nashville. **Javier Rolon**, Manager of the Miami-Dade project, **Gerald Lansaw**, PIR Manager, and **Mike Myers**, Structures Crew Supervisor for D1 South Bridges (not present), celebrated their 10-year anniversaries with ICA. All three were presented with a framed proclamation outlining their significant contributions to the growth and success of ICA.

"There is a common quality in all three of these longtime employees," said Ernie Molina, Director of Operations, "it is that they have treated the company like their own and the people who work for, and with them, like their family."



Top: Gerald Lansaw is presented with his "Proclamation" by ICA President, Butch Eley



Left: Javier Rolon is congratulated by V.P. Operations and Marketing, Troy Dover

Thanks!

A note to Bill Inman, Facilities Manager for the OOCEA project, from Sandy Lumseyfai, Airport and Beachline Main Toll Plaza Manager for OOCEA:

Thank you for all the extra efforts you make on a daily basis. I sincerely wanted to thank you and let you know that we truly appreciate it. Thanks for your professional and helpful attitude.

A letter to David Buser, project manager for Tampa I-75, from FDOT Ops Administrator Sheila George:

*On September 23, 2010, our office was asked by District Office to assist a contracted survey crew, by closing the southbound ramp at SR-326 on I-75. This was not an easy undertaking, as this is a widely used ramp by truckers and the motoring public; not to mention all the extra work involved in closing a ramp. One call to **Kyle Bianchi** and we were on our way to make this happen. With little*

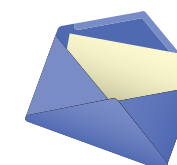
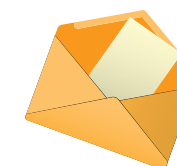
assistance from my office (one message board), Kyle and his crew had the task well in hand and it was completed on September 28, 2010, without incident.

I want to express my sincere thanks to your office and especially to Kyle for his ongoing positive attitude towards the success of this contract.

A note to David Miller and Richard Mann, OOCEA project in Orlando:

We just wanted to say Thank You for helping us out on the Highway on Monday October 25th. My husband had read the gas gauge wrong on our rental car. We made it to the airport just in time! We were the very last ones to check in. So glad we made it home that day because our Minneapolis airport had delays and no landings the next day due to high winds. We loved our trip to Orlando! It was so much fun and the weather was perfect! Thanks again,
—The Hanson Family.

CARDS & LETTERS



HELPING COMMUNITIES



The **Lake City** project office (far left) sponsored children from the Guardian Ad Litem program this year, a 5 year old boy and his 4 year old little sister, and were honored to be able to help these local children that would not have a Christmas without assistance from local businesses like ICA.

The **Nashville office** (left) sponsored a family of seven, a Mom and Dad and five children ranging in age from 1 year to 16 years old, from the St. Luke's Community House in West Nashville. Thanks to Mary Womack, damage recovery coordinator, who organized the effort and maximized the funds so this family could have a great Christmas!

ANNIVERSARIES

10 Years

Troy Dover Nashville

9 Years

Everal M. Cobourne Orlando

8 Years

David Bruder Bridges
Joseph Gilbert Sr. Bridges

6 Years

Isabella Alfonso Bridges
Philippe Foti Bridges

5 Years

Samuel Conner D/B/Bridge
Darrell Massengale Nashville
Carlos Rios Bridges

4 Year

Carlos Almeyda Orlando
Allen Below-gallina Chipley
Larry Grove Bridges
Joe Hopkins Irving
Stacey Pulver Richmond
Michael Shinn Nashville
Michael Snyder Irving
Arturo Trevino Irving
Tamecko Wilder Orlando

3 Year

Cody Adams Tampa
Gregory Hayes Chipley
Nelson Morillo Orlando
Carlos Sanchez Orlando
Desmond Shackelford Williamsburg
Jose Willis Bridges
Mary Womack Nashville

2 Year

Nicholas Alvarez Irving
Domenico Antona BIS
Robert Armstrong Skyway Bridge
Billy Auvil Tampa
Mark Edwards Tampa
Kevin Friel Fredricksburg
Jose Gonzalez Fredricksburg
Bruce Hazen Centurion
Vernet Jones Arlington

Anna Keovilayhong
Thomas Kraemer
David Miller
William Ryan
Benjamin Tucker

1 Year

Jennifer Ashburn
Clarence Broome
Christopher Cardwell
Charles Massie
Curtis Howard
Raymond Lockhart
David Lopez
Raul Marzano
Michael Pontbriand
Misael Reyes
Clayton St Clair
Lyle Steady Jr.
Keith Tracy

Nashville
Arlington
Orlando
Centurion
Irving

Williamsburg
Orlando
Fairfax
D/B/Bridge
Fredricksburg
Fredricksburg
Orlando
Houston
Fredricksburg
Orlando
Centurion
Tampa
Fairfax

Kelley Baranuk
Adulfo Baza
Charles Carroll Jr.
Calvin Cole Jr.
Randolph Cook
John Dinges
Brandon Eley
Robert Fielding
Victoria Griswold
Alex Harvey
Sabina Holguin
Curtis Howard
Mark Julian Jr.
Matthew Lansden
Edwin Lynch
Richard Mann
Jerry Martin
Charles Massie
Larry Mitchell
Richard Mullins
Ritchie Rhodes
Demian Rose
Richard Rousseau
Clayton St Clair
John Swartz
Michael Thrift
Russell Vasquez
Brad Winstead

Nashville
Houston
Fairfax
Houston
Williamsburg
D/B/Bridge
Nashville
Centurion
Centurion
BIS
Orlando
Fredricksburg
Orlando
Fredricksburg
Irving
Orlando
Houston
D/B/Bridge
D/B/Bridge
Bridges
Centurion
Williamsburg
Chipley
Centurion
Orlando
Lake City
Miami-Dade
Nashville

BIRTHDAYS

October

Billy Auvil Tampa
Ramon Aviles Orlando
Keven Belanger Centurion
Edward Bostain South Carolina
David Buser Tampa
Robert Byies Fredricksburg
Doug Carter Irving
Charles Clarke Williamsburg
Travis Cromwell Orlando
Juan Echevarria Orlando
Francesca Grimes Nashville
William Inman Orlando
Orville Jones Jacksonville
Larry Landrigan Orlando
Raymond Lockhart Fredricksburg
David Novakoski Bridges
Gerardo Puente Jr. Tampa
Misael Reyes Orlando
Carlos Rios Bridges
Benito Salazar Irving
Desmond Shackelford Williamsburg
Alfred Vetrano Jr. Tampa
Jose Willis Bridges

November

Cody Adams Tampa
Trampus Armentrout D/B/Bridge

December

Silvestre Aldaco-Mendoza Orlando
Carlos Almeyda Orlando
Demetrio Arellano Houston
Jennifer Ashburn Williamsburg
Steven Barron Centurion
Leemen Boggess Williamsburg
Cynthia Caluger Nashville
Wendy Chambers Chipley
Leonard Crowder Jr Houston
Howard "Butch" Eley Nashville
Steve Fijalkowski Roanoke
Eddie Hall Houston
Lauri Hatcher Roanoke
Gregory Hayes Chipley
Bruce Hazen Centurion
Sharon Holmes Centurion
Joe Hopkins Irving
Lewis Howard Arlington



Bill Inman, Facilities Manager for the Orlando OOCEA Project (A0904), and his wife **Patty**, would like to thank everyone at ICA for their support, prayers and best wishes concerning the health of their son **Danny**. Dan suffered a traumatic head injury in mid September requiring brain surgery. He spent the next two and a half weeks hospitalized recovering from his injury followed by a couple of months of rehabilitation, including physical, speech, and occupational therapy.

His parents are thrilled to report Dan has made a full recovery in just three months and has finally been released by his doctors to return to work. Dan's recovery was nothing short of a (Christmas) miracle based on the initial diagnosis given by his neurosurgeon. He definitely looks forward to his return to Books A Million as do his parents!



Eye On The Road

News, Views and Happenings at Infrastructure Corporation of America

Volume 7/Issue 1/January 2011

Strengthening America's Infrastructure Together!



Special January Supplement

ICA is pleased to announce the acquisition of Florence & Hutcheson Consulting Engineers

Twelve years ago we started ICA with nothing but an idea; an idea that there was a better way to preserve our nation's infrastructure assets. The big idea was to bring an asset management approach to maintaining our nation's highways. We also believed we could create a company that was different from others by setting "The Golden Rule" as our guide; respecting each person and embracing families along the way.

It was over two long years before we won our first major contract in Florida sending Infrastructure Corporation of America on its way. We have been blessed with continual growth and within ten years have reached the magical \$100 Million mark. Even so, we felt that we had achieved just the tip of the iceberg of possibilities for this company.

Last year, our Board challenged ICA management to take the company to the next level. We decided the best approach was to broaden our offerings with engineering services and so began a search for companies that would further grow our reputation in the infrastructure world.

At our first meeting with the leaders of Florence & Hutcheson last January they were not for sale, however, the more both sides learned, the more apparent it became that the fit was ideal. This transaction makes

great business sense. It allows us to participate in strengthening America's infrastructure from "cradle to grave" with no duplication of services. The geographic footprint fits like a glove and the customer bases are well matched to promote growth for both organizations. The perfect alignment of the companies' leaders, our shared core beliefs and operating philosophy, really cinched the deal.

We intend to create a joint business development team and will work to develop a strategy to capitalize on the combined strength of the companies, in short, 1+1=5. As a combined company, I believe we are absolutely at the right place at the right time. Our nation's infrastructure at all levels continues to deteriorate and governments cannot afford to abandon these precious assets. They must look for alternative delivery models and do more with less. Together, we are in a unique position to be part of the solution. The future is bright, which translates into opportunity for every single employee. I can see the day where we will double or triple our current size. The sky is the limit. Infrastructure Corporation of America and Florence & Hutcheson will strengthen America's infrastructure for decades to come...together.

—Butch Eley,
President, ICA

About F&H

Florence & Hutcheson is one of the most respected full-service, multi-disciplinary civil engineering and environmental services firms in the country. Established in 1965 just as public policy for metropolitan transportation planning was taking hold in America, Bob Florence and Dave Hutcheson merged with the idea of creating a company that would always be focused on the traditional values of engineering excellence, hard work and the goal of exceeding client expectations.

In Paducah, Kentucky, the original team rapidly began serving departments of transportation and municipalities throughout Kentucky, Illinois and Indiana. Within 10 years, F&H had expanded into Tennessee, Arkansas and Louisiana and continued expansion throughout the 1970s and 1980s into Ohio, Mississippi, South Carolina, North Carolina and Virginia. In the 1990s, F&H was contracted by the Departments of Transportation in both Alabama and West Virginia, and was awarded the first Georgia contract in 2002.

Through the years F&H has focused primarily on Transportation and Infrastructure Engineering. The firm has developed a solid reputation with federal, state, county and municipal agencies, as well as industrial, commercial and private developers and property owners.

F&H Today

The firm was ranked in the April 2010 issue of Engineering News Record (ENR) No. 258 among the 500 largest US based design firms.

With an award-winning staff of more than 300, F&H today combines the experience, the technical resources and the scope of services to implement highly complex projects with the flexibility to ensure rapidly responsive service and proactive, visionary solutions. This expertise enables the firm to provide clients the most critical information necessary for sound decisions, cost efficiencies, quality assurance and compliance with applicable community and regulatory code requirements.

While F&H has very sophisticated capabilities, the firm is also well-respected for their personable and down-to-earth staff of professionals. The company takes pride in the fact that they have earned a strong reputation for their dedication to project schedule, a history of completing work within budget, excellent team cooperation and coordination, and unparalleled client service on which the firm was founded.

The firm's geographic markets currently include the following states:

Kentucky

F&H was founded in 1965 in Paducah, KY, which is now home to 120 employees providing complete civil engineering and support services for an array of clients throughout the Commonwealth and surrounding states. The firm also operates an office in Lexington with six engineers and a satellite office in Danville.

Alabama

Since 1992 when F&H opened its first office in Huntsville, the firm has been providing a wide variety of federal, state, municipal and private Alabama clients a comprehensive range of civil engineering and environmental services. With the office's low 'overhead' and unique turn-key capabilities in-house, F&H has eagerly stepped up to the plate for our Alabama clients as the single source of accountability on a wide range of projects. By knowledgeably pursuing design and inspection quality, and by effectively controlling costs and schedule, the firm's Alabama team works to ensure that all aspects of each project progresses smoothly from concept to completion.

Arkansas

F&H has been providing services since 1992 to the Arkansas State Highway and Transportation Department (ASHTD). The firm also has established many strong relationships developed over the years through a wide range of project assignments. The firm's operations are headed by James Barr, PE, who has been the lead Project Manager on Arkansas projects since joining the firm in 2003. While F&H staff throughout the country provides a variety of additional services for Arkansas clients, F&H/Little Rock has a full staff of professionals and technicians who perform the majority of work for Arkansas projects.

Georgia

The Atlanta office (located in Kennesaw) opened in 2001 and has successfully provided municipalities, counties and the State of Georgia a wide range of transportation design, geotechnical, CE&I and environmental documentation and permitting services. In Georgia, the firm has a full-time staff of professionals and technicians as well as a CE&I team experienced in all aspects of field inspection, materials testing and technical services associated with transportation systems (roads, highways, bridges, rail), municipal infrastructure (utilities, facilities), and site development/construction.

Louisiana

F&H has been providing engineering services in LA since the 1970s. Major projects include Geotechnical Engineering and Design Services for I-10 Widening in Baton Rouge, the Union Pacific Railroad Overpass in Bossier Parish and US 190 Bridges near Slidell, in St. Tammany Parish. The firm recently opened an office in Baton Rouge and brought on board Louisiana Department of Transportation and Development (LADOTD) veteran Steve Cumbaa as Senior Consultant and Office Manager.

Mississippi

In Mississippi, F&H has been providing engineering services since the 1980s with the Mississippi Department of Transportation (MDOT) as the lead client. In 2004, the firm opened an office in Hernando, which currently has a full time staff of eight professionals and technicians. MDOT veteran Danny Walker joined F&H in 2005 to head MS operations and expand business. In 2007 the firm opened a second MS office in Blue Springs and began work on the massive industrial access project to accommodate Toyota Motors Manufacturing of Mississippi along US 78 in Union & Pontotoc Counties.

...continued on back



An Arkansas Signature Project

Springdale Northern Bypass Interchange Study
Construction Costs: \$61 to \$94 Million

Special Features:

- Study to develop alternative interchange designs for each of 3 alignments for the Springdale Northern Bypass and Interstate 540 around Springdale, AR
- Many historical and archaeological sites were evaluated and avoided where possible
- Conceptual Interchange Design



A Mississippi Signature Project

US 78 Improvements for Toyota Motors
Manufacturing of Mississippi
Construction Costs: \$46 million

Special Features:

- Capacity analysis for traffic generated by the Toyota Manufacturing facility
- Compressed schedule for survey, geotechnical and roadway design
- Extensive coordination with site developers

Today, Barry Hobson, PE manages the Blue Springs office with a full time staff of eight professional engineers.

North Carolina

F&H opened an office in Raleigh in 1983 and the firm has played a significant role in the state's aggressive statewide transportation expansion program. The original team was led by F&H CEO Rob Echols and included others who are with the company now in various F&H locations. F&H continues to have repeat work from lead client NCDOT.

In the latter part of 2008, F&H acquired NC regional engineering firm, KO & Associates, PC. F&H had worked closely with KO on a wide variety of projects for many years. In fact, Mark Acuff, who was VP of KO & Associates at the time, began his career with F&H in Paducah in 1983 – the same year F&H opened the Raleigh office. In 1986, Mark relocated to F&H/Raleigh, was named Office Manager and served F&H there for more than 10 years before joining KO. The Raleigh office has a staff of 45, and along with their extensive transportation planning and design capabilities, including roadway, bridge and rail, the staff has unparalleled expertise in water resources - specifically ecological restoration, and encompasses a team of CE&I experts.

South Carolina

F&H has provided engineering services for South Carolina clients from Columbia since 1984. Lead client for the office is the SCDOT with whom F&H has exceptionally strong ties and for whom the firm has successfully accomplished many challenging and award-winning projects. With a staff of 35 professionals and technicians, the Columbia office has a growing list of county and municipal clients through service expansion into the civil/site, water/wastewater, environmental and water resources arenas. F&H also provides services in the SC Upstate since opening an office in Duncan in 1999. A new Greenville office opened in 2007. Currently the professional and technical staff of 10 provides transportation design and CE&I services to a wide variety of public and private- sector clients. With the expansion of services into Berkeley, Charleston and Dorchester counties, F&H opened an office in North Charleston in 2008. The team primarily is comprised of CE&I staff assigned to the massive CE&I project for the SCDOT I-26 at Aviation Avenue / Remount Road Interchange Improvements in Charleston County. F&H opened a fourth SC office in Lexington County in 2010 through the acquisition of a private surveying firm. The firm's new Survey Manager supervises two survey crews in SC and is focused on business development.

Tennessee

F&H has been providing a full complement of engineering and environmental services in Middle Tennessee since 1995. Here the firm's lead client has been the Tennessee Department of Transportation (TDOT) where the firm has established many strong relationships. The Nashville office has a full-time staff of 17, including 11 professional engineers, an environmental planner, a right-of-way planner, several technicians and other staff. In 2006, F&H opened a second office in Murfreesboro to meet growing client needs in Rutherford County. In 2010, F&H assigned a lead engineer to continue to develop business throughout East Tennessee, which centers in Knoxville, Oak Ridge, and Maryville, and includes Chattanooga and Tri-Cities.

Texas

In 2005, F&H was pre-qualified to perform services for the Texas Department of Transportation. In the spring of 2010, the firm established an office in Houston to accommodate specific DOT project requirements in select districts.



A South Carolina Signature Project

SC 6 Spillway Bridge

Road and Bridge Construction Costs: \$6 million

Special Features:

- Designed for three different earthquakes per State and Federal requirements
- Two 190-foot spans over the emergency spillway approach channel with a solid wall pier in the middle due to hydraulic requirements

Awards

ACEC/ SC

Engineering Excellence Award



A Tennessee Signature Project

I-65 Widening

Construction Costs: \$110 million

Special Features:

- Three interchanges in close proximity
- High traffic volumes
- Noise barriers,
- Extensive work zone traffic control and phasing
- Trench drains for pavement drainage
- Public Awareness Program

Awards

ACEC/TN

Engineering Excellence Award